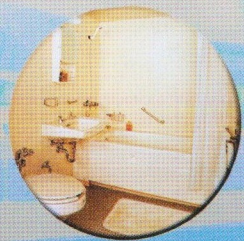
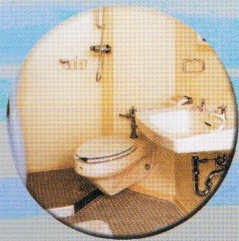
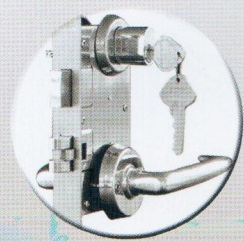
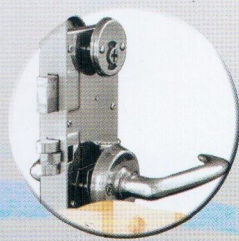
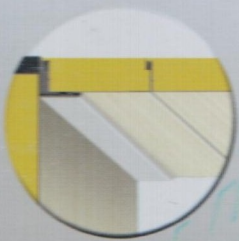
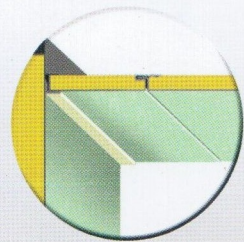
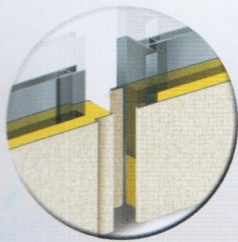
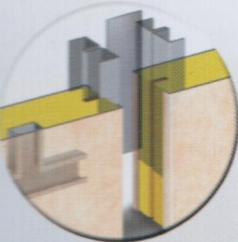
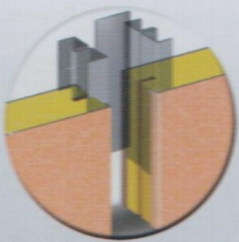
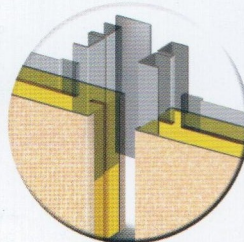
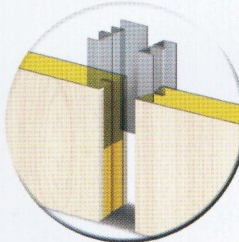
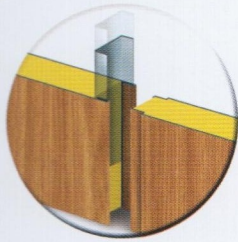
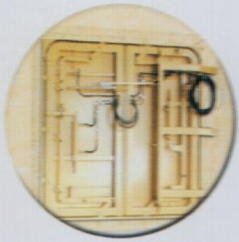
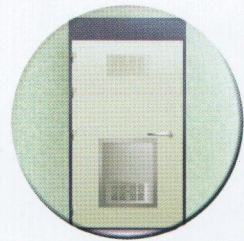
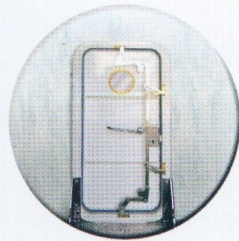
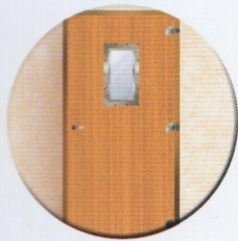


Sungmi Ships' Accommodation Catalogue



PREFACE

We, Sung Mi Co., Ltd. were established for the purpose of marine accommodation market on 2nd Sep. 1976.

Since the first development of fire door in Korea, we have been developed wall & ceiling panel by fire test in accordance with SOLAS regulation in order for fashionable harmony of accommodation, safety life of seaman and easy installation according to our continuous investment of facility, R & D, strict quality control, accumulated technology and reliance over than 27 years.

Furthermore, cabin of heavy equipment was also developed by us for market of heavy equipment and we will make efforts to promote the market with R & D, up-grade of productivity and reduction of raw material for industry of heavy equipment and building construction.

In future, we will try our best to develop more excellent goods for industry of marine accommodation & heavy equipment building, Construction and hope to hear your encouragement and advice.

Sincerely yours,

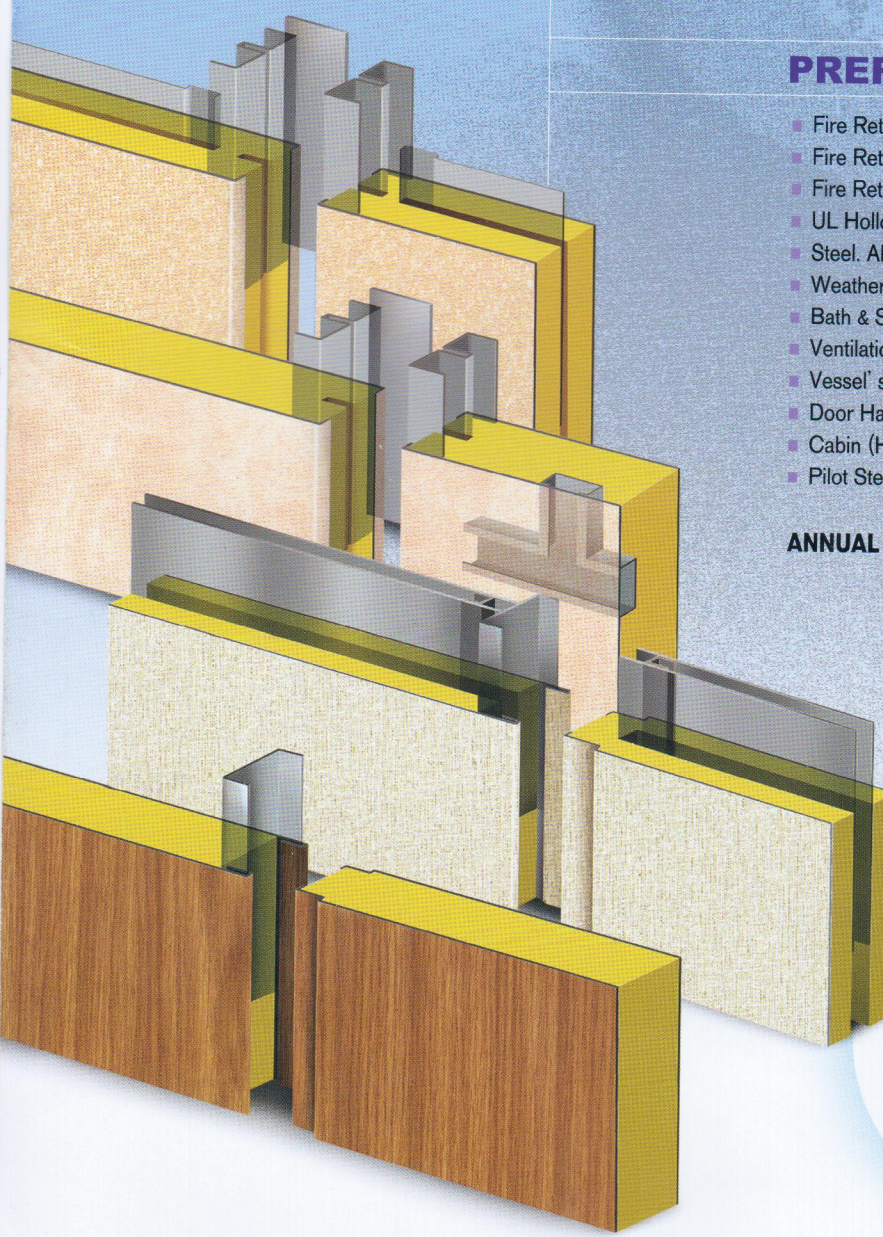
Son, Wan Hee / President

PREFACE

- Fire Retarding Door. (A-60, A-0, B-15, B-0)
- Fire Retarding Wall & Ceiling Panel (B-15, B-0)
- Fire Retarding Door. (H-60 Single & Double Door)
- UL Hollow Metal Door & Frame.
- Steel. Al & Sus Pontoon & Sliding Door.
- Weather & Gastight Door.
- Bath & Shower Unit System
- Ventilation System Fitting.
- Vessel's Accommodation System.
- Door Hardware.
- Cabin (Heavy Equipment)
- Pilot Steel Door

ANNUAL PRODUCTION CAPACITY

PRODUCT	QUANTITY	REMARK
FIRE DOOR	36,000 Sets	
FIRE WALL & CEILING PANEL	130,000 m ²	DOMESTIC : 70%
PROFILE	100,000 m ²	OVERSEAS : 30%
HARDWARE	40,000 Sets	
UNIT TOILET	2,400 Sets	
CABIN (Heavy Equipment)	6,000 Sets	
OTHER STEEL	2,500 Tons	

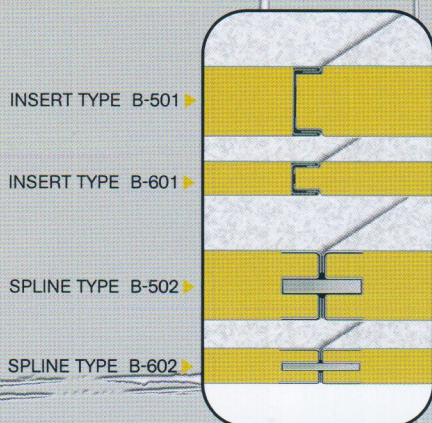


MARINE FIRE WALL PANEL &

SUNG MI ACCOMMODATION SYSTEM

Wall panel and ceiling panel of SUNG MI were immediately passed with strict fire retardant test for simple installation, physical intensity, and protection of temperature according to International Convention for The Safety of Life At Sea by IMO's Regulations. It is also that the panels were approved by many foreign authorities. High quality mineral wool, crosswise arranged, inserted into galvanized steel sheet of 0.6mm which finished with P.V.C film. Standard wall panel of SUNG MI will be certainly helpful for reduction of labour/hour at any ship's yard because the panels were installed by themselves without previous joint profile type.

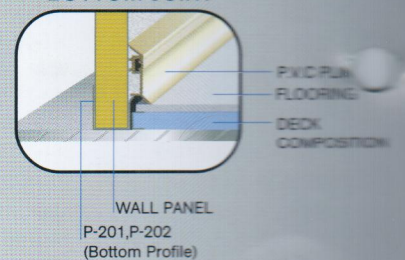
WALL PANEL JOINT



CORNER JOINT

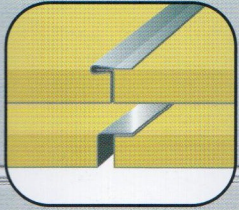


BOTTOM JOINT



CEILING PANEL

CEILING PANEL JOINT

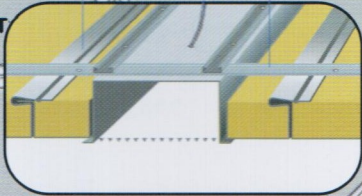


NO GAP TYPE
C-601, C-603

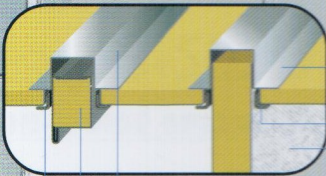
CORRUGATION TYPE
C-602, C-604

MAIN RUNNER
LIGHTING
CEILING PANEL

LIGHT JOINT



TOP JOINT



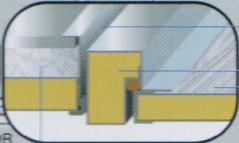
P-101
(TOP PROFILE)
P-304 (TRIM)
WALL PANEL

P-101 (TOP PROFILE)
TOP PIECE FRAME
P-304 (TRIM)

FRAME JOINT

SUNG MI B-15, B-0 (Z-TYPE)
CLASS DOOR OR FRAME

SUNG MI A-60, A-0 (BOX-TYPE)
CLASS DOOR & FRAME

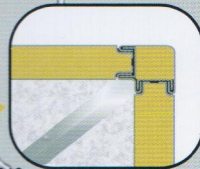


JOINT ANGLE
FRAME
DOOR

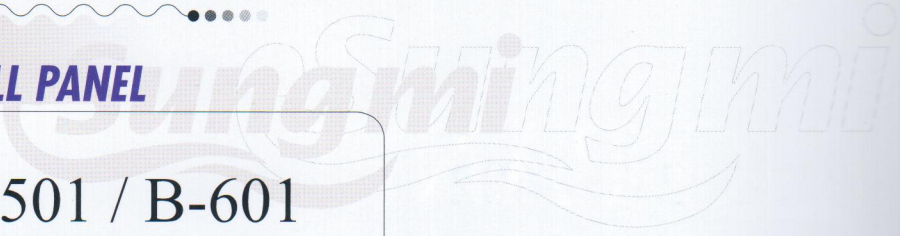
DOOR
FRAME
JOINT PROFILE
WALL PANEL

WALL PANEL

CORNER JOINT

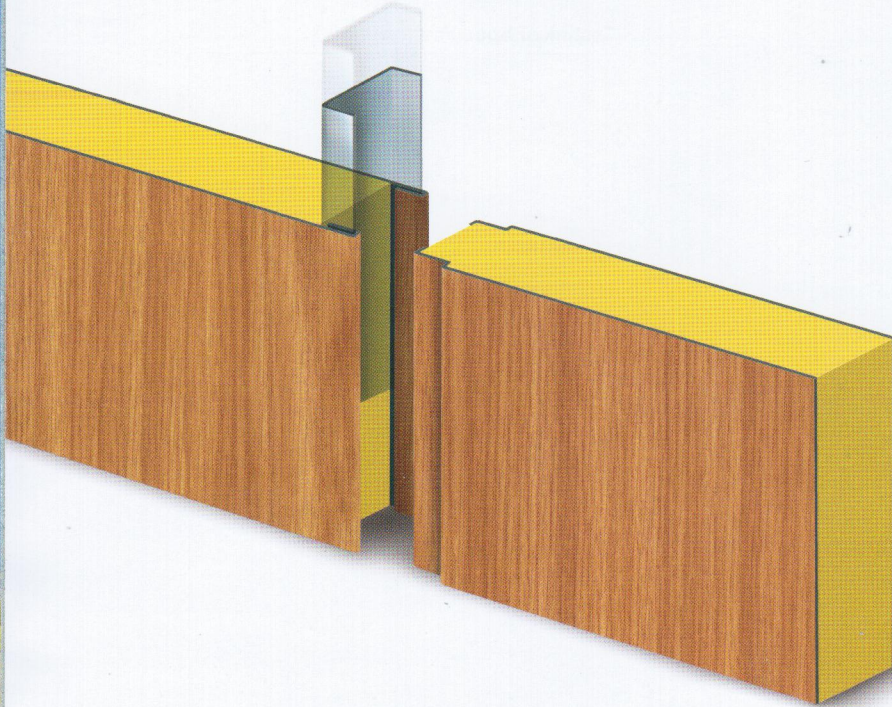


WALL PANEL
P-212
(CORNER PROFILE)



TYPE No. B-501 / B-601

B-15 / B-O STANDARD PARTITION AND LINING INSERT PANEL

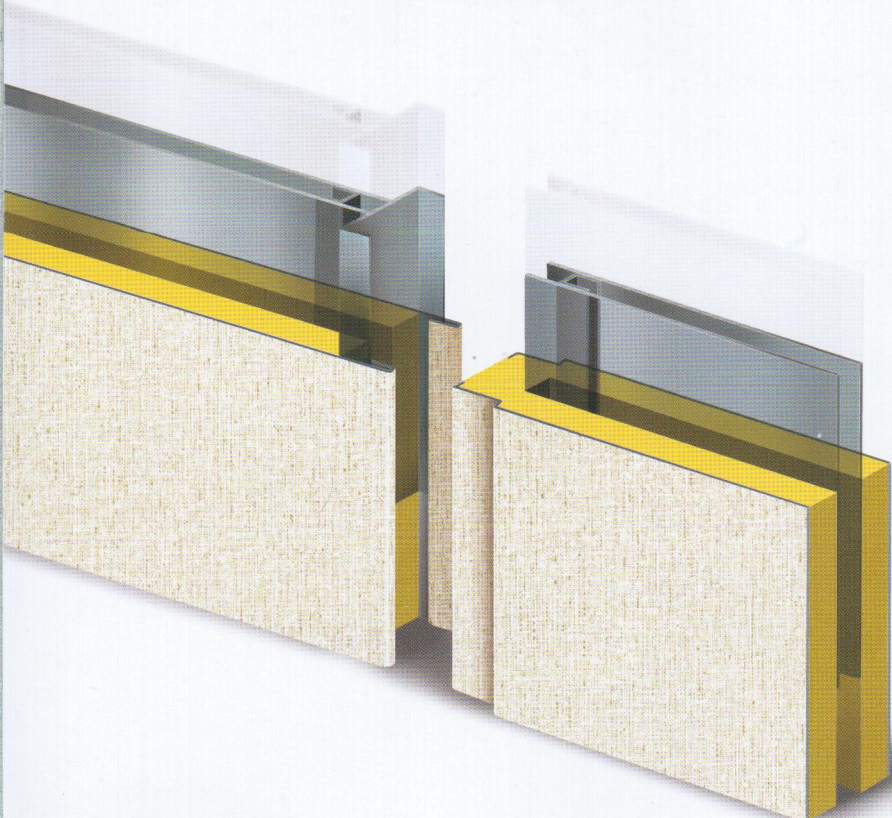


Technical Specification

Description	B-501/ B-601
Fire class	B-15 / B-O
Thickness	50mm / 25mm
Surface Material	0.15mm PVC-film
Material	0.6mm Galvanized steel
Insulation	Mineral wool 140kg/m ³
Dimension	100-550 × Req.length (Max.3600mm)
Weight	17.5 kg/m ²
Sound reduction	33dB / 32dB
Heat Transmission	0.58kcal/m ² .h.°C

TYPE No. B-501B

B-15 HI-NOISE INSERT PANEL



Technical Specification

Description	B-501B
Fire class	B-15
Thickness	50mm
Surface Material	0.15mm PVC-film
Material	0.6mm Galvanized steel
Insulation	Mineral wool 140kg/m ³
Dimension	100-550 × Req.length (Max.3600mm)
Weight	24.6 kg/m ²
Sound reduction	44dB
Heat Transmission	0.58kcal/m ² .h.°C

TYPE No. B-502 / B-602

B-15 / B-0 STANDARD PARTITION AND LINING SPLINE PANEL

Technical Specification

Description	B-502 / B-602
Fire class	B-15 / B-0
Thickness	50mm / 25mm
Surface Material	0.15mm PVC-film
Material	0.6mm Galvanized steel
Insulation	Mineral wool 140kg/m ³
Dimension	100-600 × Req.length (Max.3600mm)
Weight	18.5 kg/m ²
Sound reduction	33dB / 32dB
Heat Transmission	0.58kcal/m ² .h.°C

TYPE No. B-502B

B-15 HI-NOISE SPLINE PANEL

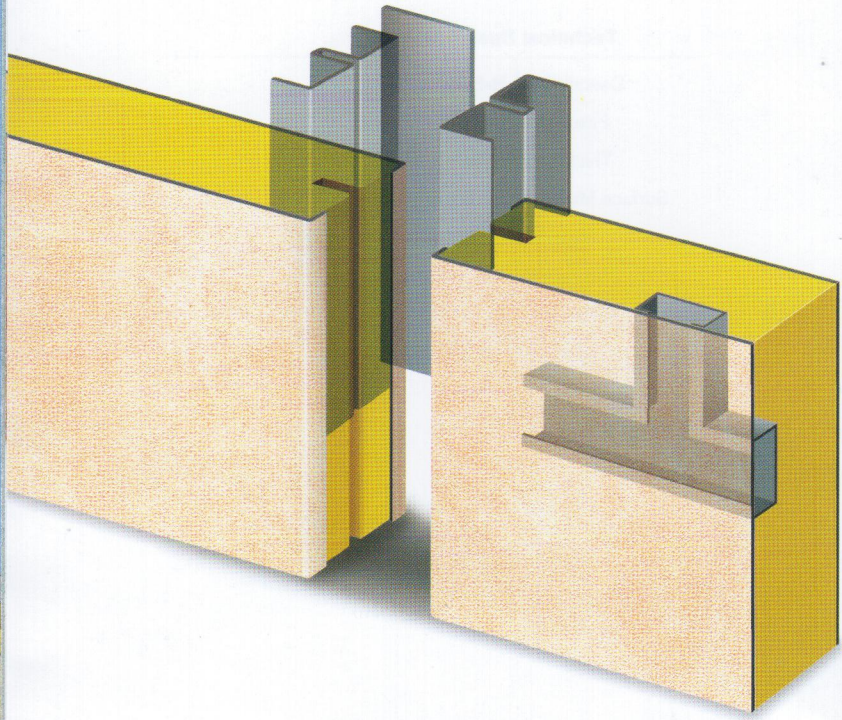
Technical Specification

Description	B-502B
Fire class	B-15
Thickness	50mm
Surface Material	0.15mm PVC-film
Material	0.6mm Galvanized steel
Insulation	Mineral wool 140kg/m ³
Dimension	100-600 × Req.length (Max.3600mm)
Weight	23.5kg/m ²
Sound reduction	44dB
Heat Transmission	0.58kcal/m ² .h.°C



TYPE No. B-502C

B-15 CABLE CONDUIT SPLINE PANEL

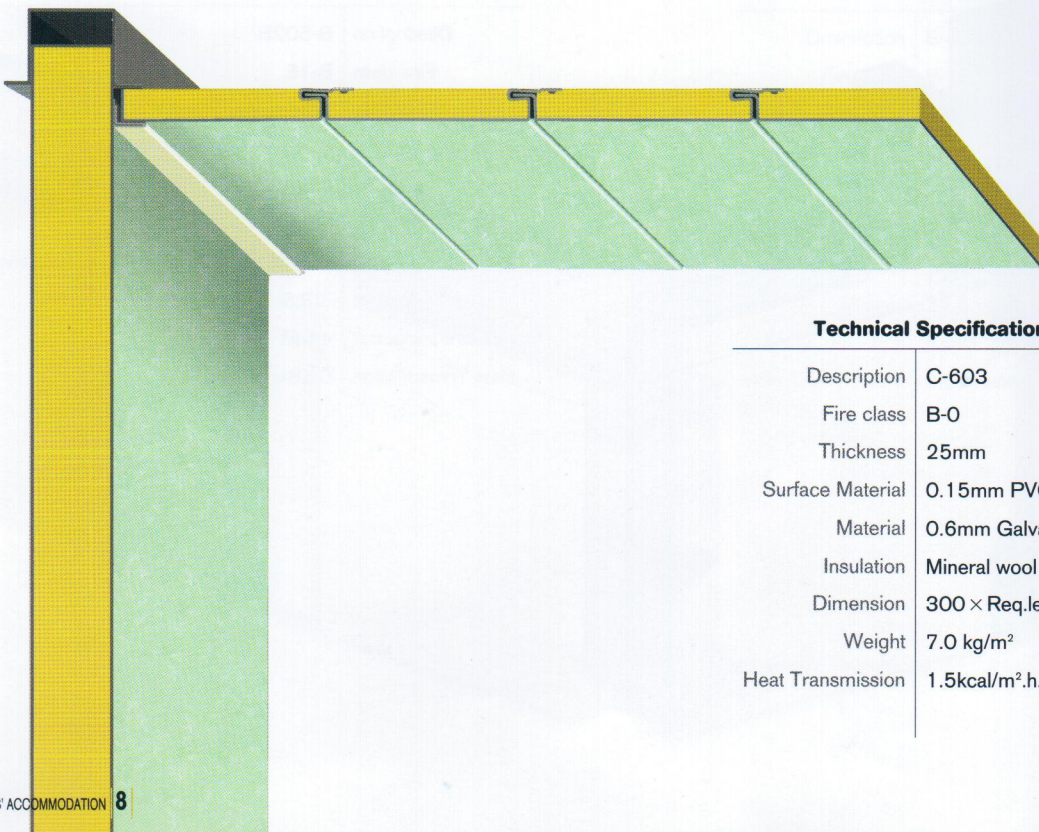


Technical Specification

Description	B-502C
Fire class	B-15
Thickness	50mm
Surface Material	0.15mm PVC-film
Material	0.6mm Galvanized steel
Insulation	Mineral wool 140kg/m ³
Dimension	100-600 × Req.length (Max.3600mm)
Weight	18.5 kg/m ²
Sound reduction	33dB
Heat Transmission	0.58kcal/m ² .h.°C

TYPE No. C-603

B-0 CLASS NO-GAP TYPE CEILING PANEL

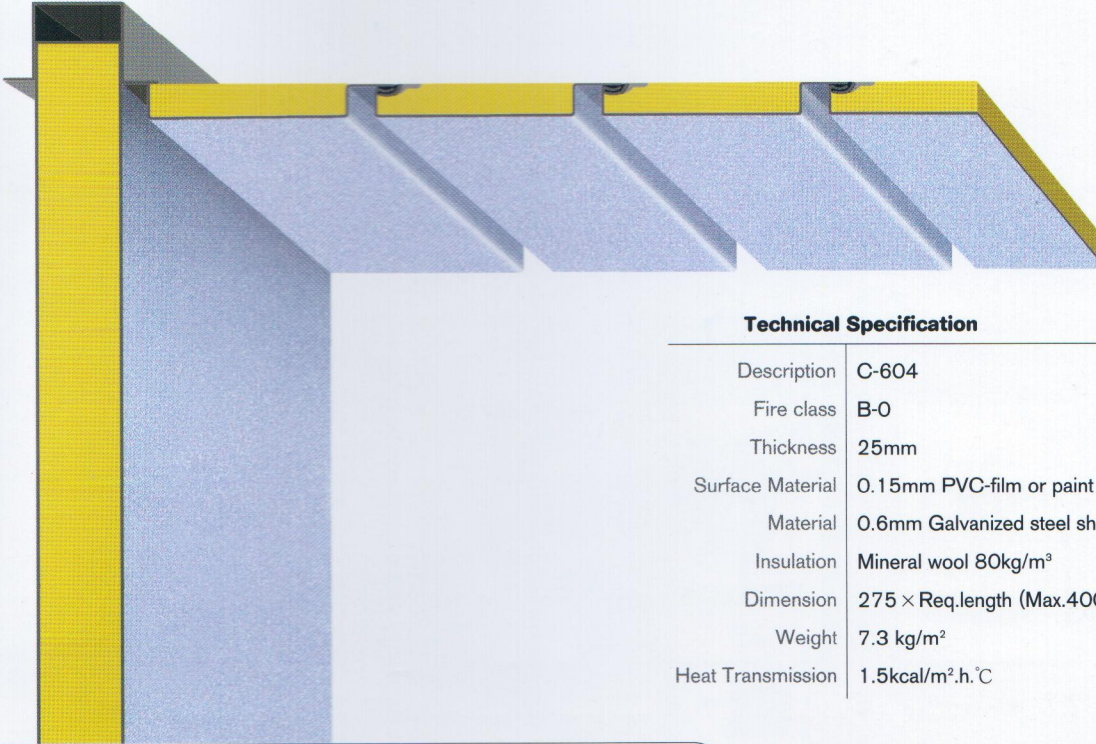


Technical Specification

Description	C-603
Fire class	B-0
Thickness	25mm
Surface Material	0.15mm PVC-film or paint
Material	0.6mm Galvanized steel sheet
Insulation	Mineral wool 80kg/m ³
Dimension	300 × Req.length (Max.4000mm)
Weight	7.0 kg/m ²
Heat Transmission	1.5kcal/m ² .h.°C

TYPE No. C-604

B-O CLASS CORRUGATION TYPE CEILING PANEL

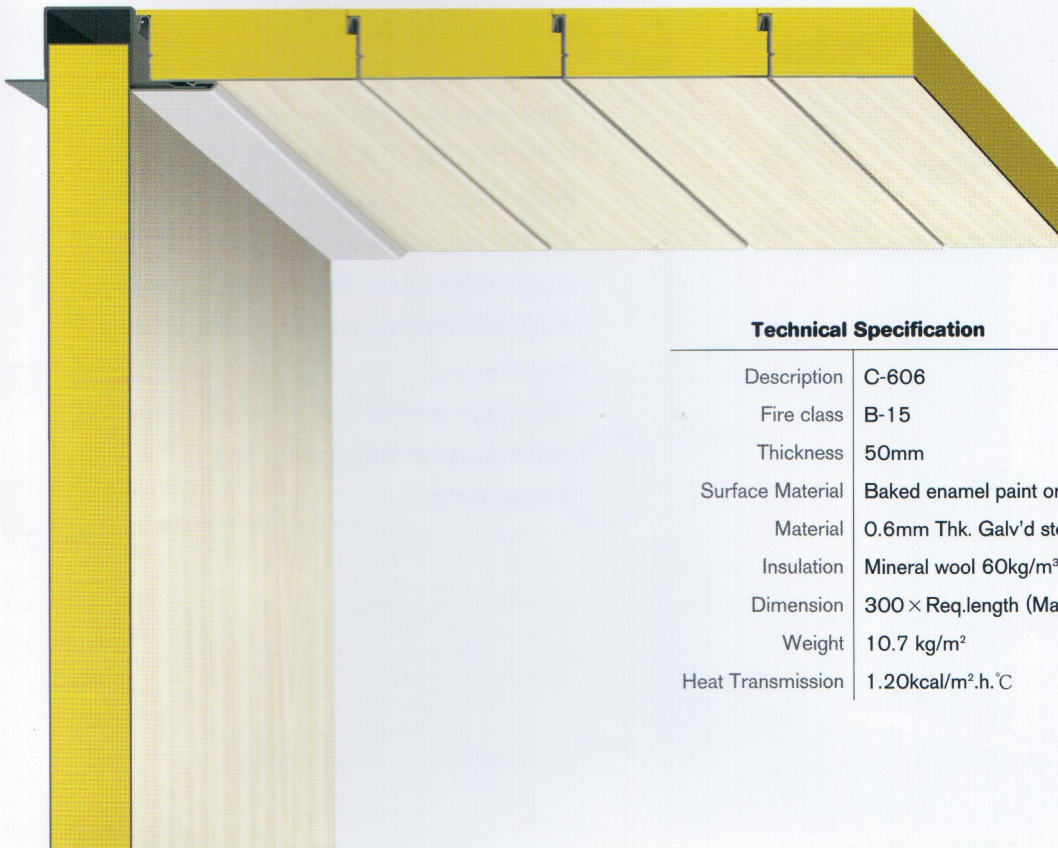


Technical Specification

Description	C-604
Fire class	B-0
Thickness	25mm
Surface Material	0.15mm PVC-film or paint
Material	0.6mm Galvanized steel sheet
Insulation	Mineral wool 80kg/m ³
Dimension	275 × Req.length (Max.4000mm)
Weight	7.3 kg/m ²
Heat Transmission	1.5kcal/m ² .h.°C

TYPE No. C-606

B-15 FIRE CLASS CEILING PANEL



Technical Specification

Description	C-606
Fire class	B-15
Thickness	50mm
Surface Material	Baked enamel paint or 150μm Thk. PVC film with protective foil
Material	0.6mm Thk. Galv'd steel plate
Insulation	Mineral wool 60kg/m ³
Dimension	300 × Req.length (Max.3000mm)
Weight	10.7 kg/m ²
Heat Transmission	1.20kcal/m ² .h.°C

UNIT SHOWER BATH ROOM



SUNG MI UNIT SHOWER ROOM & UNIT BATHROOM

AN EMBODIMENT OF HIGHER DURABILITY, MORE COMFORT, BETTER FUNCTION, BUT LESS INSTALLATION WORKS.

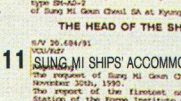
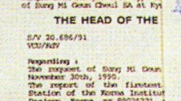
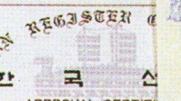
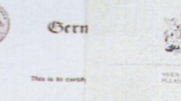
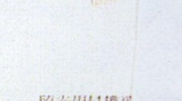
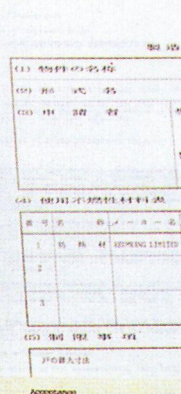
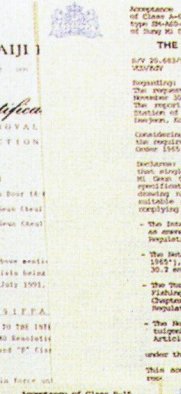
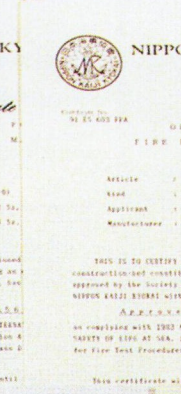
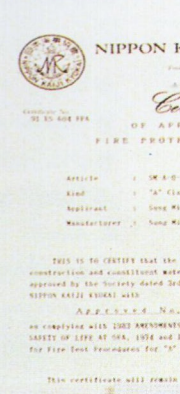
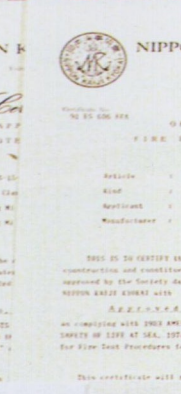
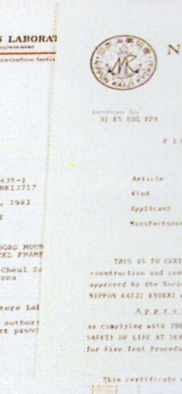
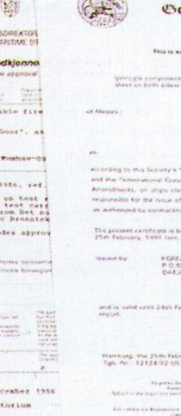
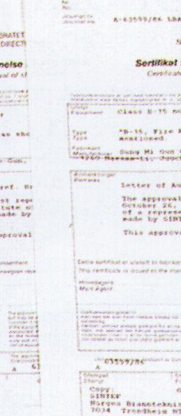
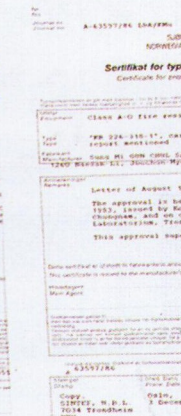
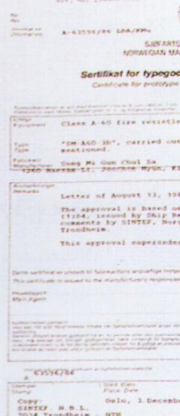
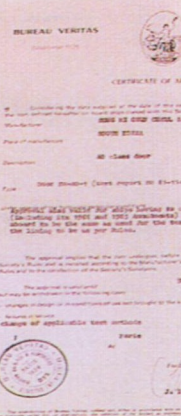
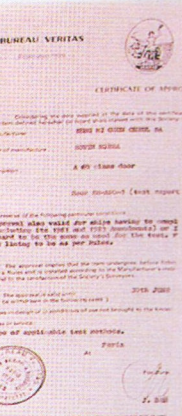
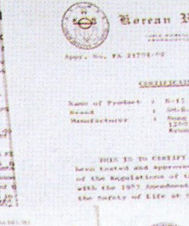
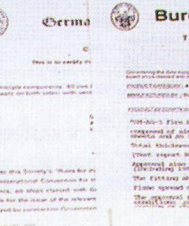
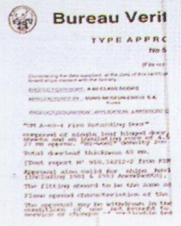
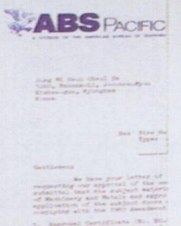
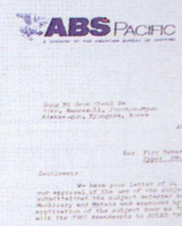
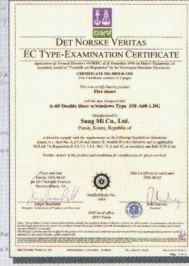
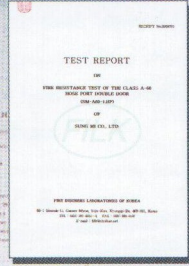
These are newly designed modulated UNIT SHOWER ROOM and UNIT BATHROOM in addition to SUNG MI various marine accommodation equipments as the fruit of concentrated study and long experience in shipbuilding industry.

Their high quality, light in weight, easy installation / of shipowners and shipbuilders.

MARINE FIRE DOOR & FRAME

MARINE FIRE DOOR CERTIFICATES

Before 27 years, SUNG MI had been developed several Kinds of fire door for the purpose of leading manufacturer of fire door in the world and have been obtained own technology & facility to manufacture UL fire door, Wall & Ceiling panel and the other ship's hardware together with fire door now. SUNG MI have also obtained many type approval (certificate) of fire retarding door, Wall & Ceiling panel based on IMO'S regulation and SOLAS (Safety of Life at Sea) from each authority (government) until now.





STANDARD A. CLASS DOOR



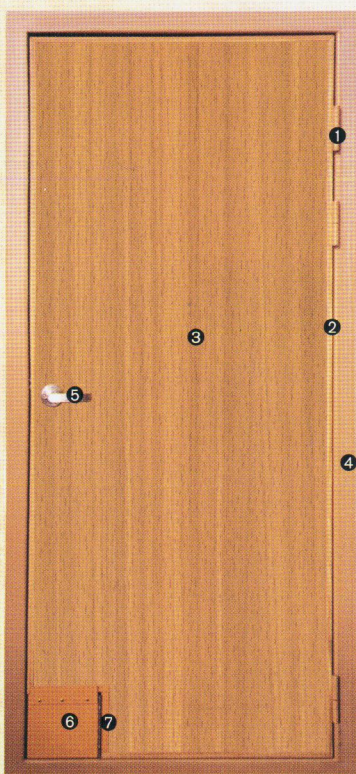
Material Construction;

A door panel is made up of a 0.6~0.8mm cold rolled steel plate, finished with edge profile of steel and stainless steel. While stainless steel covers the frame fixed by three hinges, steel is reinforced at the juncture of locks, closers, and hooks.

The door treated with mill board or mineral wool is 37~60mm in its thickness.

- ❶ edge profile : steel or stainless steel
- ❷ door leaf : baked enamel paint or P.V.C film
- ❸ cylinder mortise lock with lever handle
- ❹ frame : baked enamel paint
- ❺ packing : ceramic
- ❻ Sill plate : stainless steel

A-CLASS SINGLE HOSE PORT DOOR



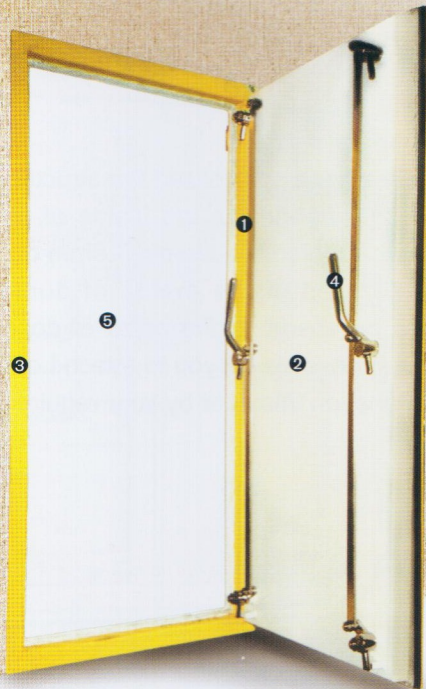
An 150×150mm size of small door is installed at the lower part of door Leaf for using Fire Hose without opening door at the Emergency.

This small door is held by Spring Hinge and it is possible to keep on closing in usual.

The Door Handle is attached on the door leaf at the same height as thickness of door in parallel and this is inserted to door inside.

- ❶ hinges : stainless steel & steel
- ❷ edge profile : stainless steel
- ❸ door leaf : P.V.C film
- ❹ frame : baked enamel paint
- ❺ mortise latch
- ❻ hose port door
- ❼ spring hinge
- ❽ threshold

A-CLASS WEATHER TIGHT CLAMP DOOR



We have improved the existing Steel Door for Weather Area into Pontoon Box type and it is possible for you to operate 3 parts of clamp dogs simultaneously by using 1 pc of Handle.

- ❶ hinges : stainless steel & steel
- ❷ door leaf : 80mm thick heavy duty door construction with 3.0mm steel face sheet
- ❸ frame : 6.0mm heavy duty profiled steel frame for welding to bulkhead.
- ❹ hardware : Three point clamp and heavy duty handle type

H-60 CLASS HEAVY DUTY SINGLE WEATHER TIGHT DOOR



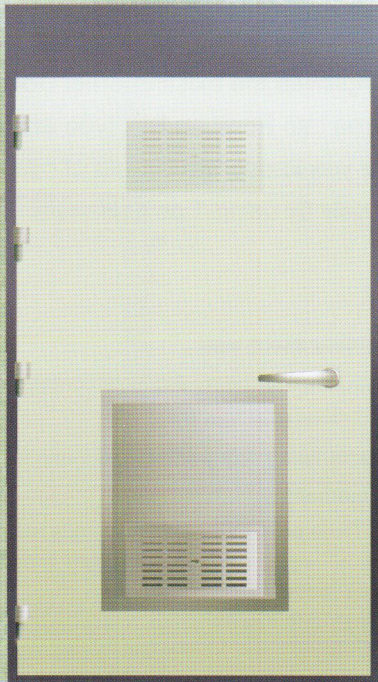
Our H-class Door had been carried out the test in accordance with H-Class Door IMO. res 754(18) and Hydrocarbon Fire Test mentioned on Lloyd's register Standard Test Procedure. The time and temperature were based on NPD-Hydrocarbon Curve.

- ❶ hinges : heavy duty hinges with grease nipples.
- ❷ fire glass : Single / Double lead 300 × 500mm
- ❸ door leaf : 101mm thick heavy duty door construction with 3.0mm steel face sheet.
- ❹ frame : 5.0mm heavy duty profiled steel frame for Welding to bulkhead.
- ❺ hardware : lever handle

Max. Approved size : Single leaf clear opening 1000 × 2100mm
 Double leaf clear opening 1760 × 2150mm



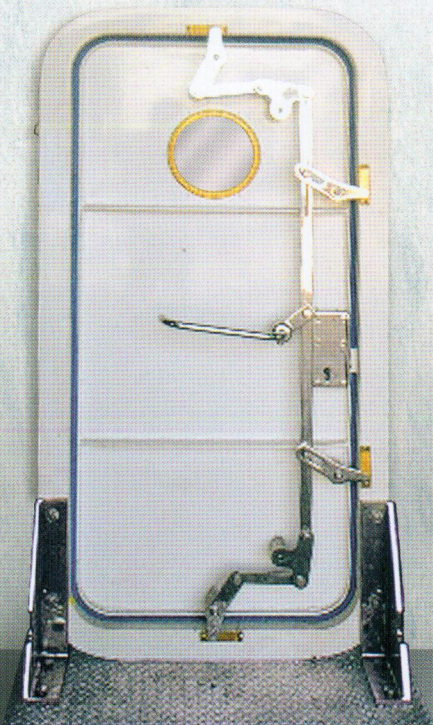
B-15/30 CLASS SINGLE HI-NOISE DOOR



(SOUND REDUCTION : 41dB)

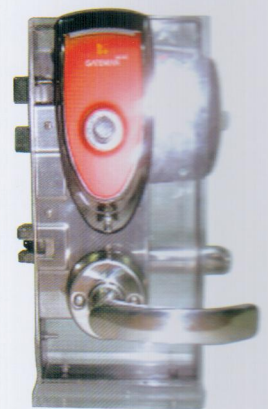
This door has been specialized the structure that the Ducts are inserted in the inside of door in order to be circulated the air and 1.0mm of many holes perforated in the inside of ducts are possible to be absorbed the noise of door by it self. Also it is possible for you to attach Louver or Kick Out Panel on this door by your requirement.

WEATHERTIGHT DOOR



- **Door Plate Material**
Steel
Aluminum
Stainless Steel
GRP
- **Frame Material**
Steel
Aluminum
Type : Angle bar steel--75 × 50 × 8mm
Aluminum--75 × 50 × 8mm
Flat bar--70 × 8mm
Flush
- **Corners**
Square corners
Radius corners
(Clear Opening:R=100mm)
- **Seal**
Neoprene-45 × 20mm(± 45° shore)

**SM-1301+
DIGITAL BUTTON**

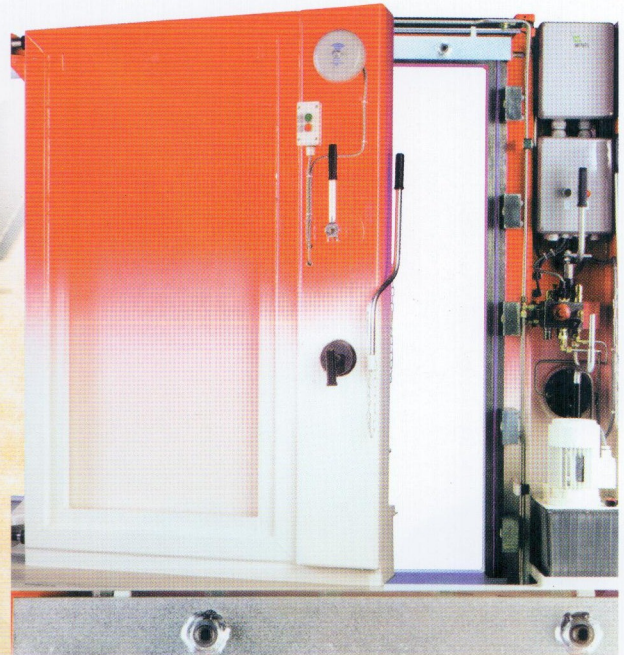
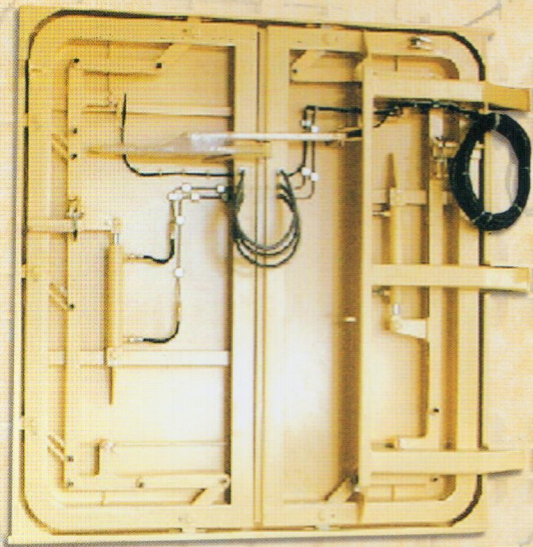


Technical Specification

Door Thickness	35mm~60mm
Backset	55mm~60mm

PILOT DOOR
FOLDING & SLIDING TYPE

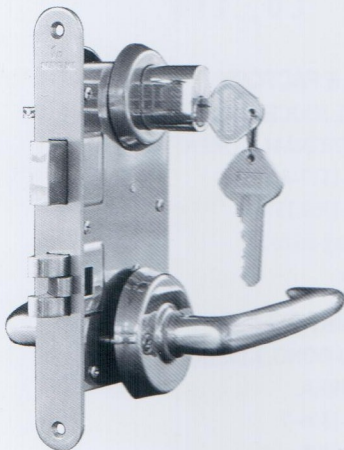
WATERTIGHT
SLIDING DOOR



MARINE FIRE DOOR HARD WARE

SM-1105

CYLINDER MORTISE LOCK

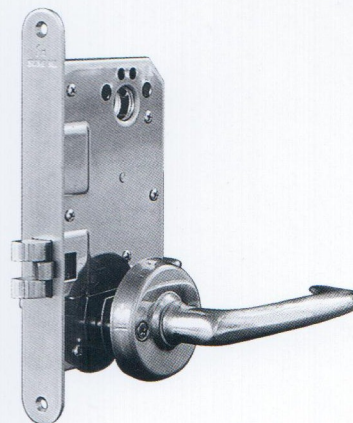


Technical Specification

Key Arrangement	Grand Master Key System
Standard	6-Pin Cylinder
Door Thickness	35mm - 60mm
Backset	55mm

SM-1301

MORTISE LATCH

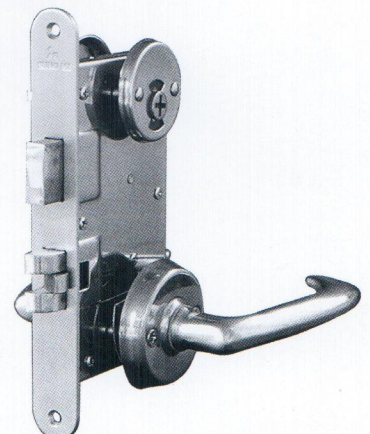


Technical Specification

Door Thickness	35mm~60mm
Backset	55mm

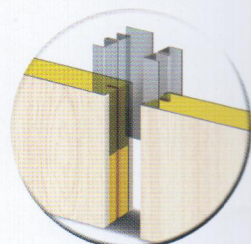
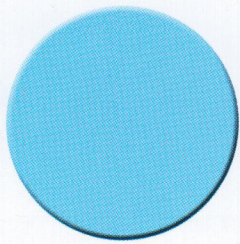
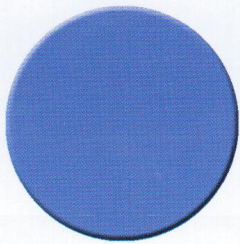
SM-1503

INDICATOR MORTISE LOCK



Technical Specification

Door Thickness	35mm~60mm
Backset	55mm



Sm **Sungmi**
SUNG MI CO., LTD.